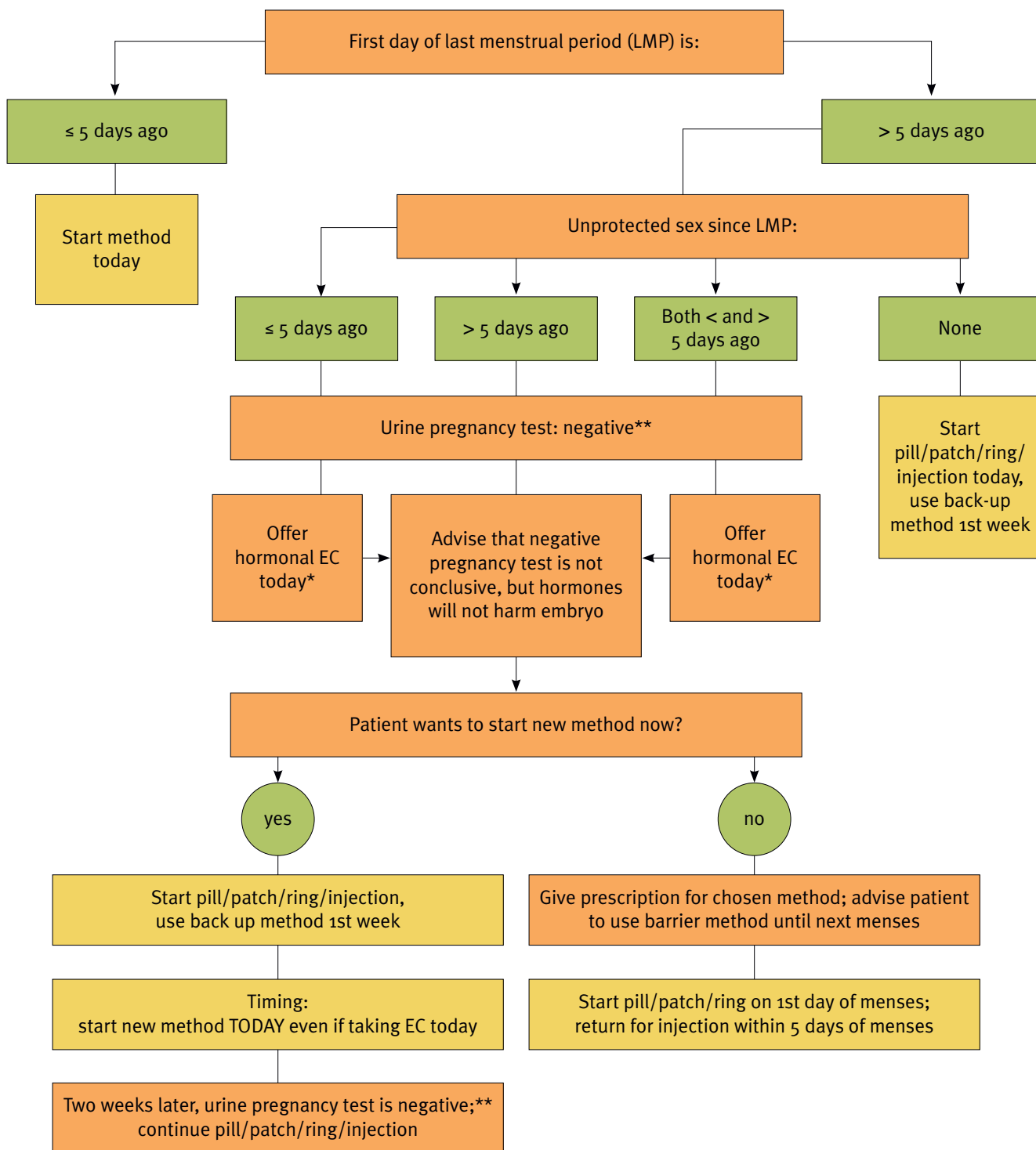


# Quick Start Algorithm

Woman requests a new birth control method:

## 1. Pill, Patch, Ring, Injection



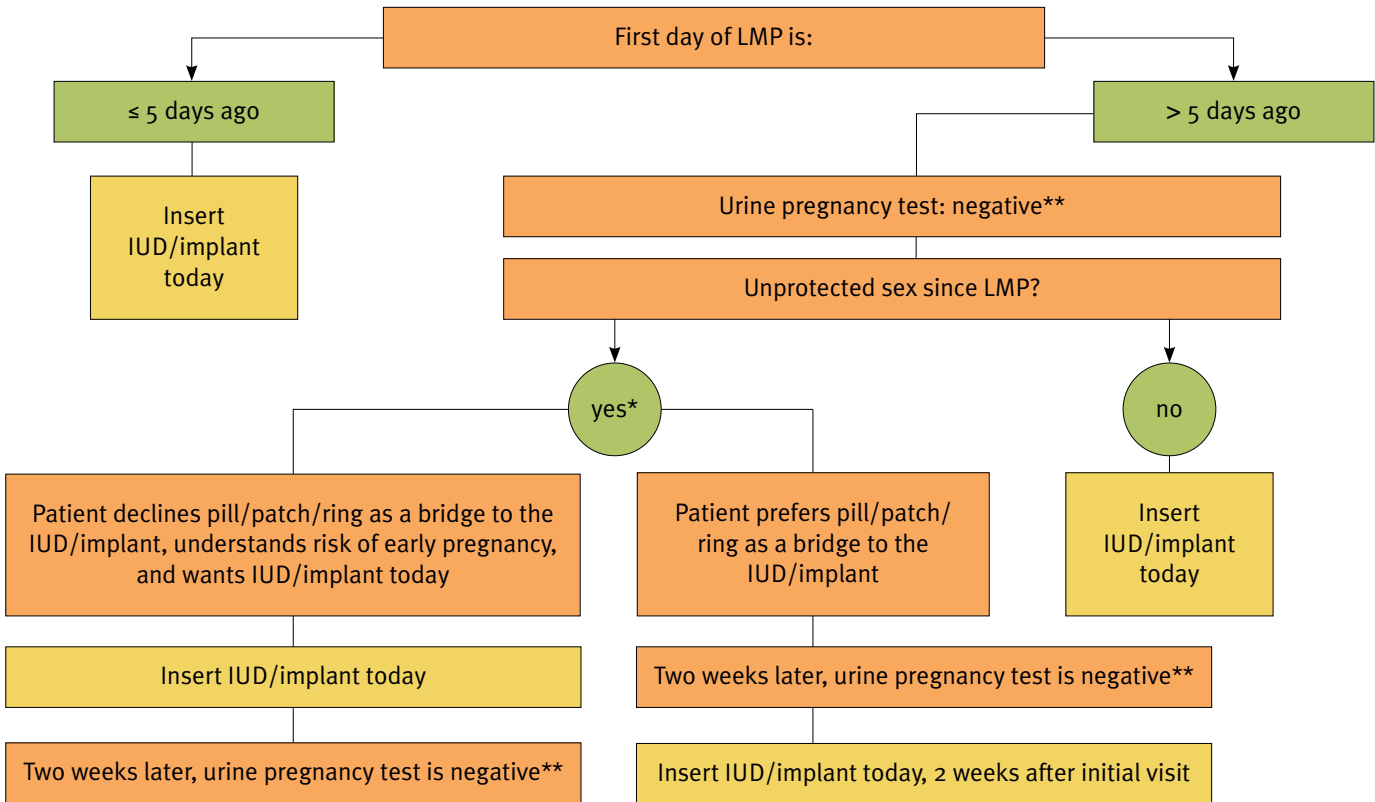
over →

\* Because hormonal EC is not 100% effective, check urine pregnancy test 2 weeks after EC use.

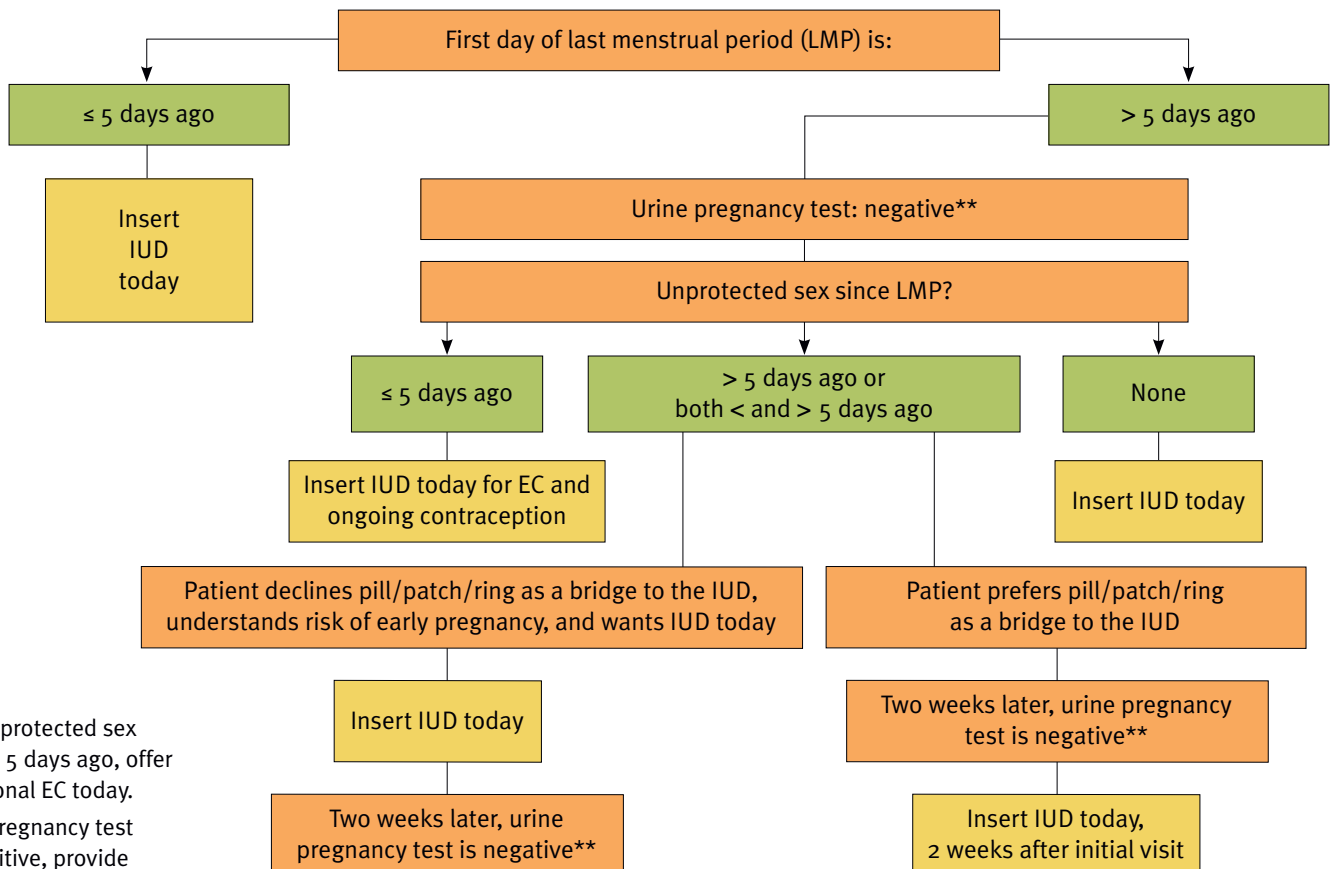
\*\* If pregnancy test is positive, provide options counseling.

**Note:** These algorithms are based on the algorithm for injected progestin that appears in the 2012 *Pocket Guide to Managing Contraception* by Hatcher RA, Ziemann M et al, page 126.

## 2. Progestin IUD or Implant



## 3. Copper IUD



\* If unprotected sex was < 5 days ago, offer hormonal EC today.  
 \*\* If pregnancy test is positive, provide options counseling.